

THIS INSTRUMENT PREPARED BY  
DAVID P. LINDLEY  
OF  
**CAULFIELD and WHEELER, INC.**  
SURVEYORS - ENGINEERS - PLANNERS  
7900 GLADES ROAD, SUITE 100  
BOCA RATON, FLORIDA 33434 - (561)392-1991  
CERTIFICATE OF AUTHORIZATION NO. LB3591

# FIELDS AT GULFSTREAM POLO PUD - PLAT ONE

A PLANNED UNIT DEVELOPMENT  
BEING A REPLAT OF A PORTION OF BLOCK 28, PALM BEACH FARMS COMPANY PLAT NO. 3,  
AS RECORDED IN PLAT BOOK 2, PAGES 45 THROUGH 54, OF THE PUBLIC RECORDS OF PALM BEACH COUNTY, FLORIDA,  
LYING IN SECTION 29, TOWNSHIP 44 SOUTH, RANGE 42 EAST, PALM BEACH COUNTY, FLORIDA

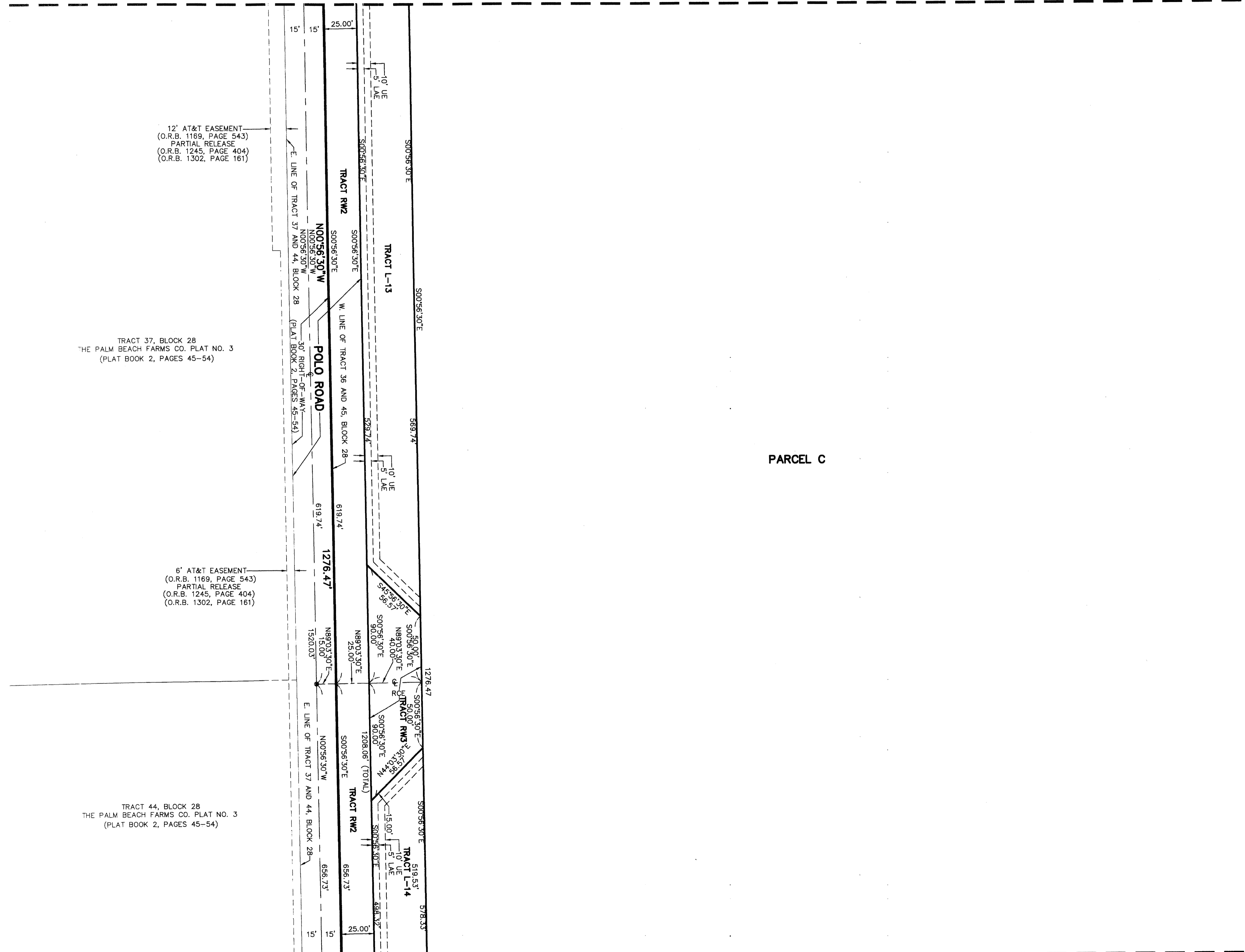
92

STATE OF FLORIDA  
COUNTY OF PALM BEACH  
THIS PLAT WAS FILED FOR  
RECORD AT \_\_\_\_\_ M.  
THIS \_\_\_\_\_ DAY OF \_\_\_\_\_  
A.D. 20\_\_\_\_ AND DULY RECORDED  
IN PLAT BOOK \_\_\_\_\_ ON  
PAGES \_\_\_\_\_ AND \_\_\_\_\_

SHARON R. BOCK  
CLERK AND COMPTROLLER

BY: \_\_\_\_\_  
DEPUTY CLERK

MATCH LINE SHEET 3 OF 16



12' AT&T EASEMENT  
(O.R.B. 1169, PAGE 543)  
PARTIAL RELEASE  
(O.R.B. 1245, PAGE 404)  
(O.R.B. 1302, PAGE 161)

TRACT 37, BLOCK 28  
THE PALM BEACH FARMS CO. PLAT NO. 3  
(PLAT BOOK 2, PAGES 45-54)

6' AT&T EASEMENT  
(O.R.B. 1169, PAGE 543)  
PARTIAL RELEASE  
(O.R.B. 1245, PAGE 404)  
(O.R.B. 1302, PAGE 161)

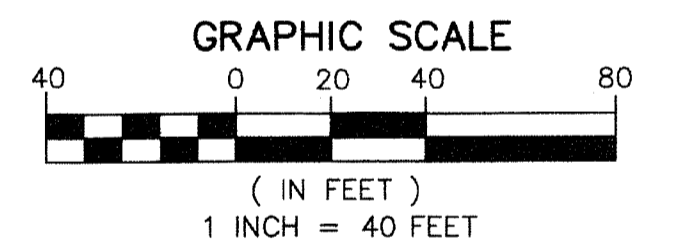
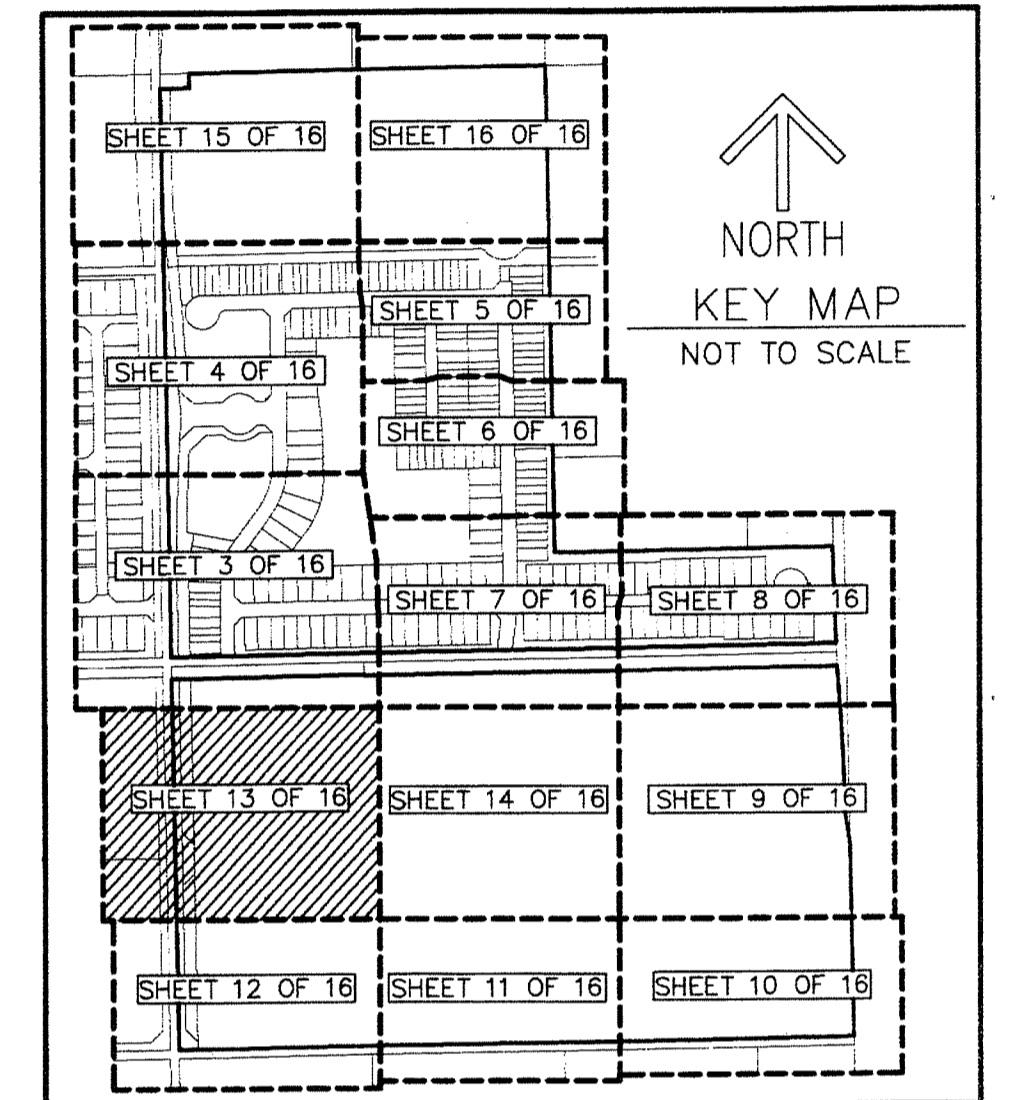
TRACT 44, BLOCK 28  
THE PALM BEACH FARMS CO. PLAT NO. 3  
(PLAT BOOK 2, PAGES 45-54)

PARCEL C

MATCH LINE SHEET 14 OF 16

MATCH LINE SHEET 12 OF 16

SHEET 13 OF 16



### NOTES COORDINATES, BEARINGS AND DISTANCES

COORDINATES SHOWN ARE GRID  
DATUM = NAD 83 (90/98 ADJUSTMENT)  
ZONE = FLORIDA EAST  
LINEAR UNIT = US SURVEY FEET  
COORDINATE SYSTEM 1983 STATE PLANE  
TRANSVERSE MERCATOR PROJECTION  
ALL DISTANCES ARE GROUND  
SCALE FACTOR = 1.0000236  
GROUND DISTANCE X SCALE FACTOR = GRID DISTANCE  
BEARINGS AS SHOWN HEREON ARE GRID DATUM,  
NAD 83 (90/98 ADJUSTMENT), FLORIDA EAST ZONE.

### LEGEND/ABBREVIATIONS

- CL - CENTERLINE
- Δ - DELTA (CENTRAL ANGLE)
- CB - CHORD BEARING
- CD - CHORD DISTANCE
- DE - DRAINAGE EASEMENT
- E - EASTING
- L - ARC LENGTH
- LAE - LIMITED ACCESS EASEMENT
- LB - LICENSED BUSINESS
- LMAE - LAKE MAINTENANCE ACCESS EASEMENT
- LME - LAKE MAINTENANCE EASEMENT
- LSE - LIFT STATION EASEMENT
- L.W.D.D. - LAKE WORTH DRAINAGE DISTRICT
- N - NORTHING
- MOWE - MAINTENANCE AND OVERHANG EASEMENT
- O.R.B. - OFFICIAL RECORD BOOK
- PBCUE - PALM BEACH COUNTY UTILITY EASEMENT
- R - RADIUS
- RCE - ROADWAY CONSTRUCTION EASEMENT
- (RAD) - INDICATES RADIAL LINE
- UE - UTILITY EASEMENT
- SWE - SIDEWALK EASEMENT
- ▶ - INDICATES "ZERO" SIDE OF LOT LINE
- PRM - DENOTES PERMANENT REFERENCE MONUMENT  
4" x 4" x 24" CONCRETE MONUMENT WITH  
ALUMINUM DISK STAMPED "C&W PRM LB3591"
- PCP - DENOTES PERMANENT CONTROL POINT  
NAIL AND METAL DISK STAMPED "PCP LB3591"